



Mid Nottinghamshire Place-Based Partnership (PBP) Plan

2024/25 Refresh

Foreword

Welcome, Adam Hill, Chair of the Mid Nottinghamshire PBP.

Welcome to the refresh of our Mid Nottinghamshire Place Plan.

Since we published our last Plan, we have seen innovation, creativity and lots of great delivery and I am grateful for the contribution and commitment every partner has given. I am immensely proud in our achievements as a partnership.

Our health and wellbeing is strongly shaped by the conditions in which we are born, grow, live, learn, work and age throughout our lives.

Improving lives is going to require a renewed focus on improving and joining up services, tackling health inequalities in a purposeful and coordinated way working alongside and championing the voices of our communities in Mid Nottinghamshire. This is in addition to committing to be a proactive partnership that seeks to prevent ill health and ensure equity in our approach.

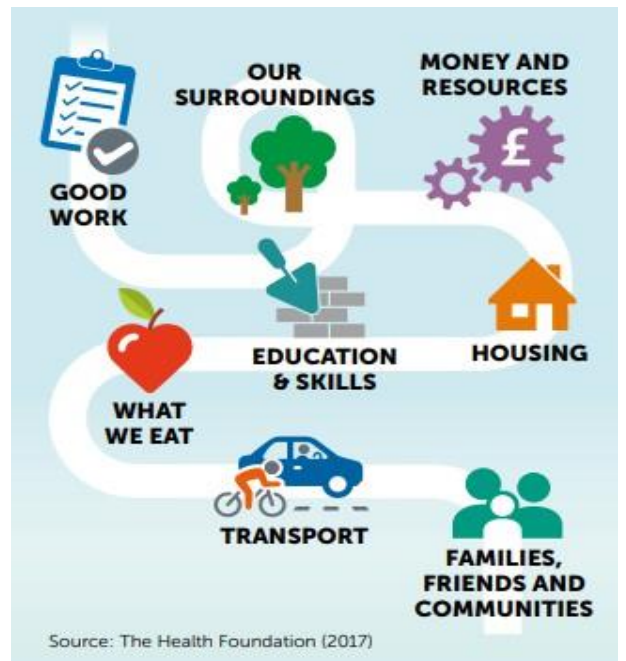
We have some significant challenges but as a mature partnership of key stakeholders bringing together councils, NHS, Wider Public sector organisations, third sector, businesses, education, further and higher education institutions and many other organisations, we are at a time of real opportunity to continue our work together in the delivery of this Place Plan, bringing lasting benefit to the lives of people who live, learn or work in Mid Nottinghamshire.



Adam Hill
Chair



Thilan Bartholomeuz
Clinical Lead



Our Place Plan 2024-25

This document is aimed at system and operational leaders working as partners of our Mid Nottinghamshire Place Based Partnership to set out our strategic direction for the partnership and our areas of focus, through partnership programmes and integrated teams. Our Mid Nottinghamshire PBP is a key delivery vehicle and integral part of the wider Nottingham and Nottinghamshire Integrated Care System family.

This plan sets out who we are, our challenges, what we have achieved, what we want to achieve together in the future working towards a shared vision and priorities, how we intend to achieve this through our programmes of work, how we intend to know we are adding real value and making an impactful difference in serving our populations and supporting our workforce.

This Plan should be considered alongside:

- **The Nottingham and Nottinghamshire Integrated Care Strategy 2023-27**
- **The Nottinghamshire Joint Health and Wellbeing Strategy 2022-26**
- **Ashfield's Be Healthy, Be Happy Strategy 2021-25**
- **Mansfield's Towards 2030: A Plan for Wellbeing**
- **Newark and Sherwood's Health and Wellbeing Strategy 2022-2026**
- **Nottingham and Nottinghamshire NHS Joint Forward Plan 2023-2027** (The NHS element of the Integrated Care Strategy – refreshed in June 2024).
 - Mid Nottinghamshire PBP will continue to identify specific opportunities within its delivery plans to support with the prevention and proactive care for long term condition management (all age) and our most frail population, helping to drive forward system wide transformation delivery.

Challenges

This plan has been developed in a national context of reduced healthy life expectancy, increasing health inequalities, climate change and recovery from the pandemic. We have experienced critical system and winter pressures, workforce challenges and now face additional challenges with an increased focus on establishing a sustainable financial position to deliver best value for our population.

We also have an ageing and growing population with evolving health and care needs as people and organisations also struggle to cope with the cost of living crisis. We remain committed and ambitious for our people and communities in Mid Nottinghamshire and know that by working together we can deliver the ambitions in this refreshed Place Plan, respond to the challenges facing us today, improve health outcomes over the longer term by building on our partnership and community assets through place based integrated working.

Mid Nottinghamshire

Key health challenges for Mid Nottinghamshire

People living in the more deprived areas have higher levels of unemployment, lower levels of qualifications, less healthy lifestyle choices and poorer health and wellbeing outcomes compared to those in less deprived areas.

POPULATION

The registered population in Mid Nottinghamshire was 346,921 in 2024.

- The population is made up of 50.2% female and 49.8% male
- The area's 10-year population increase since 2014 is 8.9%

ETHNICITY

Mid Notts population is less diverse than the national average.

91.1% of the population identifying as White British compared to 74.4% nationally.

Asian/Asian British is the second largest ethnic group in Mid Notts (1.8%) [2021 Census].

AGE

Mid Notts population is older than England average and getting older.



- 20.4% are aged 65+ [Higher than the national average (20.1% compared to 18.6%)].

Since 2011:

- 65+ population has increased by 15.6%
- 0-19yrs has reduced by 5.4%.

LIFE EXPECTANCY

Mid Notts females and males are below the England average for life expectancy.

		
MID NOTTS	82.1	78.1
ENGLAND	83.1	79.4

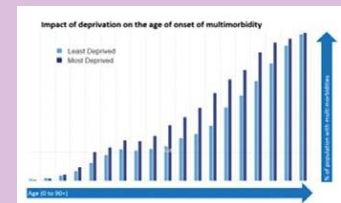
HEALTH INEQUALITIES

There is a higher percentage of multi-morbidities for those populations who are most deprived. This is a particularly marked between 45 and 70 years.

78% of Mid Notts population report they are in good or very good health. England and Wales average is 80%.

21.3% of Mid Notts population are 'disabled under the Equality Act'.

6.7% of Mid Notts population are 'not disabled but have a long-term physical or mental condition'.



BEST START

22,000 of 0-19 years in Mid Notts had a recording of a mental health condition, majority are low complexity and in medium or high deprivation, evenly spread through each year of age. (75,000 0-19 years).

849 mothers reported to have a smoking history (in last two years). 62% were in the highest deprivation.

LIVING WELL

There were almost 3,000 potential years lost across Mid Notts in male citizens during 2020 (1177 in female citizens) due to alcohol.

Ashfield, Mansfield and Newark & Sherwood have three of the four highest smoking prevalence (ranging from 16.5% to 23.1%) in Nottinghamshire where the average is 15.4%.

Residents of Mansfield and Ashfield are 10% below the national average in achieving recommended physical activity levels.

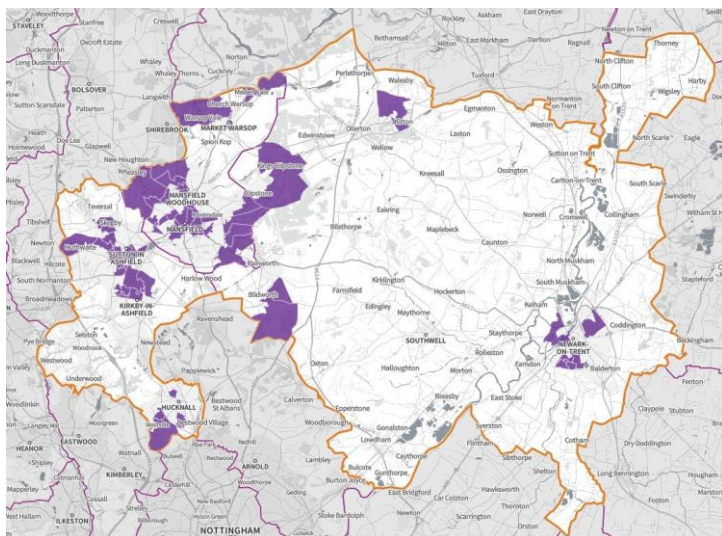
AGEING WELL

Older people who are severely frail are 13.8 times more likely to have a hospital admission. Those who live alone are 8.8 times than those not living alone.

Mid Notts has the largest number of people identified as severely frail compared to other Nottinghamshire Places.

The Mid Notts PCNs have the highest percentages of older people living alone (15% to 20%).

Our CORE20 Target Population



27.1% of population living in most deprived quintile.

- Ashfield - 26.9%
- Mansfield - 41%
- Newark & Sherwood - 14.6%

Mid Notts IMD score is 24.6%, 2.9% higher than England IMD score (21.7%)

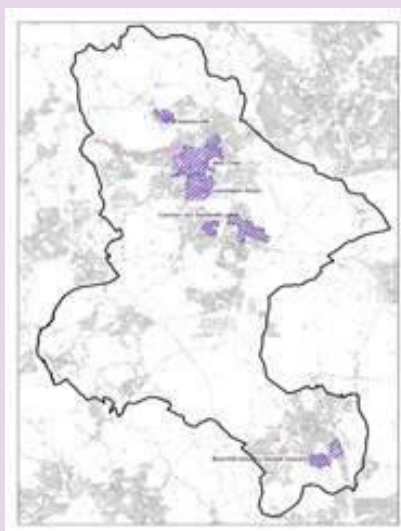
7,465 0-14yr olds and 14.1% aged 65+ living in income deprivation decile 1.

There is a total of 211 Lower Super Output Areas (LSOA) areas in Mid Notts:

- Approximately 58 LSOA areas are in the 20% most deprived nationally.
- Approximately **27% of the Mid Notts population live in an area of high deprivation.**
- Ashfield and Mansfield have identified the following priority neighbourhoods:

Ashfield Identified Neighbourhoods

Broomhill, Coxmoor, Leamington Estate, New Cross, Stanton Hill.



Mansfield Identified Neighbourhoods

Bellamy Estate, Bull Farm, Oak Tree, Portland (town centre).



Newark and Sherwood have adopted a flexible, data-led approach.

Our Place Based Partnership

Our Mid Nottinghamshire PBP has a long history of collaborative working to address the population needs of its 346,921 citizens building upon the successful Mid Nottinghamshire Better Together Alliance.

The End of Life Together Service and MSK Together Service are now independent programmes, demonstrating the success of the PBP to nurture new and innovative ways of service transformation.

To deliver our vision “Working together to enable everyone across Ashfield, Mansfield, Newark and Sherwood to live healthier and happier lives, to prosper in their communities and remain independent throughout life.

The Mid Nottinghamshire PBP brings together over 15 health and care organisations including, local authority, commissioners, community services, primary care networks and GPs, hospitals, VCSE and citizen representatives. We have a governance structure which all partners are committed to. Governance is reviewed regularly as we continue to evolve to remain fit for purpose.

Our structure includes:

- **An Executive Group.**
- **A Partnership Forum.**
- **A Health Inequalities Oversight Group (which has a number of Task and Finish Groups delivering specific pieces of work).**
- **District level Health and Wellbeing Partnerships and Place Boards.**
- **Primary Care Networks.**

Please see our website for further information: <https://healthandcarenotts.co.uk/care-in-my-area/mid-nottinghamshire-pbp> and sign up to receive our Newsletter.

As we mature, success during 2024-25 will include continuation of established trusted place partnership working (leadership and operational programme focused integrated teams); a refreshed PBP outcomes framework to evidence our impact and delivery of our long term vision; and the PBP being recognised as a valued delivery partner within the Nottingham and Nottinghamshire Integrated Care System with opportunities for flexibilities/delegations explored.

The next five pages provide an overview of the achievements made by Mid Nottinghamshire PBP in 2023/24.

Our Place Based Partnership

2023-24 Mid Nottinghamshire PBP Achievements

BEST START+

Ensure local prioritisation and co-ordination of the Nottinghamshire **Best Start Strategy 2021-2025** (first 1,001 days from conception to 2 years) to ensure children have the best start in life and improve **mental health support** for young people (up to 19 years 25 SEND) to help shape lifelong health and wellbeing outcomes

Notts Help Yourself (part of virtual family hub) has **new section on Immunisations**

The roll out of Family Hubs was agreed at the Nottinghamshire County Council (NCC) Cabinet meeting held on the 28th March 2024. Hubs have been identified for: Sutton In Ashfield, Hawtonville and South Mansfield (Oak Tree/Ravensdale)

Increased rates of Breast Feeding across Mid Nottinghamshire
Target of **46.5%**, achievement **46.8%**.
Compared to previous year increases were seen across all districts: **2%** In Ashfield, **1.5%** in Mansfield and **1%** in Newark and Sherwood

Big Baby Week celebration at Kirkby Leisure Centre, with over **100+** families attending

Oral health training was made available to any professional working with children and families (childcare settings, primary schools, Children's Centre Services, Family Service and Schools and Families Specialist Services). The training was provided by the Community Dental Services team

Improving School Readiness
Contain Outbreak Management Fund (COMF) funding secured to support speech, language and communication needs of 'Covid Babies'

Breastfeeding Friendly In the Community Initiative, increase in accredited venues (April 2024)
Ashfield **45**,
Mansfield **28**,
Newark & Sherwood **55**
Total of **128**, up from **125** December 2023

Smoking at the time of delivery continues to drop at SFHT 2023 due to targeted intervention – 24, **12.2%** a further **2%** decrease against the National Target of **6%**

Childhood Vaccination Figures (PCN Figures as at Quarter 3)
93 - 97% uptake for 1 year olds
85 - 97% for MMR (1st dose) at 2yrs and 2nd dose 79 - 94%

CYP Mental and Emotional wellbeing Kirkby Pilot Project.

As a result of the Safer Street 4 project, ICS/PBP local design team and local intelligence, CYP Mental Health co-funded a consultant to do targeted work in Ashfield

CYP Mental Health Workshop took place in March 2024 with attendance from various roles such as CAMHS, Early Years and commissioning. Delivery Plan is in development

Delivery against the Best Start Strategy 2021–2025 is on track in Mid Nottinghamshire. Programme is rating itself as 'Amber' to maintain focus

Our Place Based Partnership

2023-24 Mid Nottinghamshire PBP Achievements

LIVING WELL

Help people in our communities live healthier for longer through a focus on **promoting primary prevention**, responding as a partnership to the **cost-of-living crisis** and **transforming services**

Community Service Transformation Programme.

- Ashfield Local Design Team working with Digital Notts on the roll out of the **Healthwave Hub**
- Newark Local Design Team implementing the **My Support Record** with plans to roll out to other LDTs for their consideration/use.
- Mansfield LDT powerful and meaningful engagement and insight work around **CYP MH**.
- The development of **integrated neighbourhood working**
- Sherwood Local Design Team commenced March 2024 and is now forming future conversation and work with partners

Ashfield's Leisure Operating Contract has seen over **1.5m** attendances throughout the year. This is the highest number and equates to **121%** of last year's achievement. There are over **9,000** members across Lammas, Hucknall and Kirkby Leisure Centres and over **3,600** on the Everyone Active Learn to Swim Programme

Mansfield Fuel Bank received **£10k** funding from the EEM Cost of Living Fund and has been shortlisted for the Building Communities Award for the Best Use of an EEM Charitable Donation

Mansfield Fuel Bank issued **57** emergency fuel vouchers to residents in fuel crisis supporting **88** residents, **64** adults and **24** children

Winter Well Day - Rosewood PCN and partner organisations held their Winter Well Day for our Severe Multiple Disadvantaged (SDM) cohort in January 2024 at the Beacon Centre, Mansfield which saw **70** people attend. The Mayor of Mansfield and six Councillors were also in attendance

Support to **Place Boards** across Mid Notts secure funding and deliver projects, such as **UK Shared Prosperity Funding (UKSPF)** to support places, businesses and improve health
Examples:

Discover Ashfield Board agreed allocation of £61,668 UKSPF towards walking, cycling, gardening and sustainable food projects

Mansfield Place Board: £50k UKSPF secured to undertake an 18-month community project focusing on Oak Tree

Newark and Sherwood: funding awarded to enable feasibility studies around Active Travel and Asset Based Community Development in priority places

Warsop Health Hub, opening June 2024 <https://warsophealthhub.co.uk/>

Cost of Living Response

Partnership response included developing and publishing directories, fuels banks, feeding networks supporting thousands of residents and receiving awards

Cost of Living Response

Event held at Southwell Market Place in which residents had access to around services covering varying topics from Health & Wellbeing, Mental Health Support, Independent Living and Debt & Finance support. The event saw **40** people attend

Cost of Living Response

Newark and Sherwood District Council's continued response to support local residents with the Cost of Living crisis agreed

Health and Wellbeing Event took place at Trowell Community Centre, Mansfield, on 14th February 2024. **30** citizens attended. Action plan developed to tackle accessibility, using learning from the event to bring more to the citizens in terms of outreach with a focus on community services

Social Prescribing

2606 referrals made. **2425** Unique patients seen. **11068** onward referrals made

Social Prescribing

Social Prescribing **Creative Space – Ashfield** Community Hub opening June 2024

MSK Together held community 'Waiting Well, Living Well, with MSK Together' events on 6th and 7th March 2024 in Mansfield and Newark, inviting people who are on a waiting list for assessment or treatment (including surgery) of an MSK condition. The event brought together health, community and voluntary services under one roof, collaborating resources to really listen to people and find out 'What Matters to You'. **Over 200 people attended**. Quotes from attendees included: "I think it is a good thing, now I know when I will get there. Felt supported" and "Great idea to hold this type of event which provides a variety of information"

Oakwood Surgery ran a morning event for Carers. **20** carers attended to access help and support from the following services: Mid Notts Butterfly Project, Health and Wellbeing Leisure Centre Managers, Learning Disability Nurses, Alzheimer's Society, Benefits Officers and the Radford Care Group

Our Place Based Partnership

2023-24 Mid Nottinghamshire PBP Achievements

AGEING WELL

Support our older people with underlying conditions to maintain their independence, using risk stratification and multi-disciplinary personalised care approaches, which also aims to increase community connections, activity, and relationships

Clinical Frailty training package has been created for adoption in 2024/25

The Mid Notts Butterfly Service continues to provide a compassionate and holistic approach to end-of-life care which is to be expanded in a Best Years Hub pilot addressing frailty and loneliness for over 65's - **1576** people supported to date, **79** volunteers recruited and training, **66** Support groups, **50** seated exercise sessions

Age UK Loneliness Map shows many areas across Mid Notts with a very high risk of loneliness. This has been used as a baseline to look at the areas of loneliness in Mid Notts to form the basis of the Best Years Hub PID. NTU report August 2023 in N&S **40% suffer from loneliness** with moderate or high risk of depression

Frailty Dashboard developed with training provided by SAIU. Figures from this were instrumental in developing the successful PID for the Best Years Hub

Proactive care model pilot commenced in Ashfield North PCN through an ICB funded pilot to target over 65s with a respiratory condition - providing proactive care to help maintain independence and keep people well at home. The Pilot figures (September 2023 – March 24) demonstrate that there has been an increase in patients contacted (**85**) that have agreed to join the pilot, therefore there has been an increase in care planning and referrals on to relevant services and have completed their annual reviews

Care Home Dashboard developed with training provided by SAIU

Recognition of the value of carers across Mid Notts. Newark and Mansfield LDTs involved in the Carers roadshows in 2023, with plans to support the **5** roadshows planned to date in 2024

Falls Prevention has been incorporated into the new Enhanced Health in Care Homes (EHCH) Framework which will be implemented in all **112 care homes** across Mid Notts

Ageing Well Task and Finish Groups established in across Newark and Sherwood and Mansfield, to align work across the PBP. Ashfield to commence in 2024/2025

HEALTH INEQUALITIES

Address key health inequalities and equity of access through **proactive population health management programmes** (using the **Core20Plus5** framework for children and adults) prioritising geographical areas and population groups most in need and experiencing severe multiple disadvantage

Physical Health Checks for SMI Patients

1430 patients with SMI have had all six physical health checks completed in March 2024. This is 66% of all patients with SMI

Personal Health Budgets (PHB) for Health Improvements

£10K awarded to Mid Nottinghamshire to build on existing exercise referral model. As of March 2024, **20 referrals** have been received so far with an average spend of £144.39

Clinical Leadership

Dedicated Clinical Leadership roles in place to support the programme:
Mid Notts PBP Clinical Lead
Mid Notts PBP Health Inequalities Clinical Lead
***New** HIIIF Clinical Lead
***New** Integrated Neighbourhood Teams (INT) Clinical Leadership roles

Supporting Fuel Poverty: Homes Upgrade Scheme (HUG2)

PCN's are case finding patients who are off the gas grid, live in houses which have poor energy rating (EPC D – G) and have the lowest incomes to prevent hospital admissions due to cold related harm and to improve health through living conditions. Since July 2023, Mid Notts PCN's have referred **84 patients** for further fuel poverty support

Early Liver Disease Diagnosis – FibroScan Case Finding (NUH)

Hepatology Department at NUH, working on behalf of the Mid Nottinghamshire PCN's, are case finding patients who are at risk of having liver disease and offering Fibroscans with Rosewood PCN the first to go live. As of March 2024, **158** patients have been scanned with **15** of those scoring moderate to positive

Targeted Lung Health Checks

Patients aged between 55 and 75 who smoke or have smoked across Mansfield and Ashfield continue to benefit from Targeted Lung Health Checks. As of March 2024:
7.167 CT Scans have taken place, diagnosing **110** Cancers;
94 Lung, **8** Urology, **4** Upper GI, **1** Lower GI, **2** Breast, **1** Head and Neck

Encouraging Smokers to Quit Programme

Working in collaboration with Your Health Notts Sherwood PCN have sent opt out SMS to 629 eligible patients (Over 18's). Of those, **434** were successfully referred into the smoking cessation pathway

Smoking in Pregnancy Incentive Scheme (Phoenix Team)

In 23/24 = **83%** of people of pregnant people achieved a smokefree birth and 65% of participants also chose to breast/chest feed their babies

Mid Nottinghamshire Health Inequalities Oversight Group (MNHIOG) meets monthly and has strong representation from across the PBP

Tackling Health Inequalities through PHM approaches (embedded approach with great outcomes)

PBP Infographic Dashboard developed which includes 'live' projects, performance data and lived experiences (where available)

Rosewood PCN is also continuing its excellent SMD Service and are the only known PCN in the Country to do so

PBP DEVELOPMENT

Continue to enable our partnership to mature, embody our principles and values in the way we work together to deliver integrated services and achieve our vision for the population of Mid Nottinghamshire

Embedded shared vision, ambition, themes, and objectives that are agreed locally

Themed Forum workshops on Personalised Care and Co-production and Strengthening Our Partnerships – Health Inequalities Innovation and Community Priorities held. Joint training and covering suicide prevention, tackling violence and aggression, trauma informed care, embedding co-production and personalised care into the way we work in Mid Nottinghamshire

Accelerated Design Event held which focussed on Integrated Neighbourhood Working

The Additional Roles Reimbursement Scheme (ARRS) is an NHS initiative to enable Primary Care to diversify its workforce by recruiting health care professionals, such as; Clinical Pharmacists, Paramedics, Social Prescribing Link Workers, Care Navigators and Health and Wellbeing Coaches.

For 2023/24 **223** (194.549 WTE) posts were in place

Delivery of programmes of work that are data/needs led combined with local knowledge and insight using trusted sources to work with communities

A bid has been submitted to Volunteering for Health fund; part of the £10 million Volunteering for Health programme designed to help deliver the recommendations of the NHS Volunteering Taskforce. The outcome of the bid will be released May 2024

Leveraging community assets and developing bottom-up approaches to meet the unique needs of people living in our priority areas, co-produced with individuals with experience. Mid Notts Estates Group has been re-established in support of this

Securing “Investing in Communities” funding (£450K over three years) building blocks of health in six priority neighbourhoods

Recruitment is underway for Community Development and Financial Inclusion Officers

Multiple professionals working together, creating the conditions for success, and making effective use of combined resources available in Mid Nottinghamshire

Communications and Engagement Plan for 2023/24 developed

Collaborative, integrated, personalised, person centred, strength-based ways of working in arranging and delivering services, making every contact count. Learning together and sharing good practice

Co-ordinated reporting to the Joint Health and Wellbeing Board. Speaking with one voice and influencing for the population of Mid Nottinghamshire

Securing HIIIF (£858k 2024/25) to develop four Integrated Neighbourhood Teams to address Health Inequalities
Recruitment is underway for INT Co-ordinators and Comms Support

The Way We Work

The way we work in Mid Notts

Place Based Partnership's key principles

- The collective MN Place Based Partnership approach adds value over and above any single organisational approach.
- The work is inclusive, reflecting ways in which the inequalities our residents experience are proactively addressed.
- The voice of our population and communities are central to discussion and key to decision making.
- There is a specific focus on those neighbourhoods identified as currently underserved and in greatest need.
- The work of the Place Based Partnership focuses on the local needs of our population and communities. It is aligned and linked to local and national outcome frameworks and supports the delivery of the Integrated Care Partnership's Integrated Care Strategy for Nottingham and Nottinghamshire and the Joint Health and Wellbeing Strategy of the Nottinghamshire County's Health and Wellbeing Board.

Agreed principles of Placed-Based Working

- There is no hierarchy, everyone is equal, egos are left at the front door.
- All organisations are linked up and networked. New ones are welcome. The system doesn't have a centre or revolve around one or two organisations.
- All have strengths to bring and challenges they face. Recognising this is key to developing a strong team.
- We need to support each other to achieve shared objectives "We win together, we lose together" ethos.
- All organisations work with people and communities in ways that focus on their strengths and empower them to maximise their well-being and independence.

Mid-Nottinghamshire Place-Based Partnership

Our Partners

PREVENTION – EQUITY – INTEGRATION

The Way We Work



Mid Notts PBP definition of Integrated Working



Mid-Nottinghamshire
Place-Based Partnership

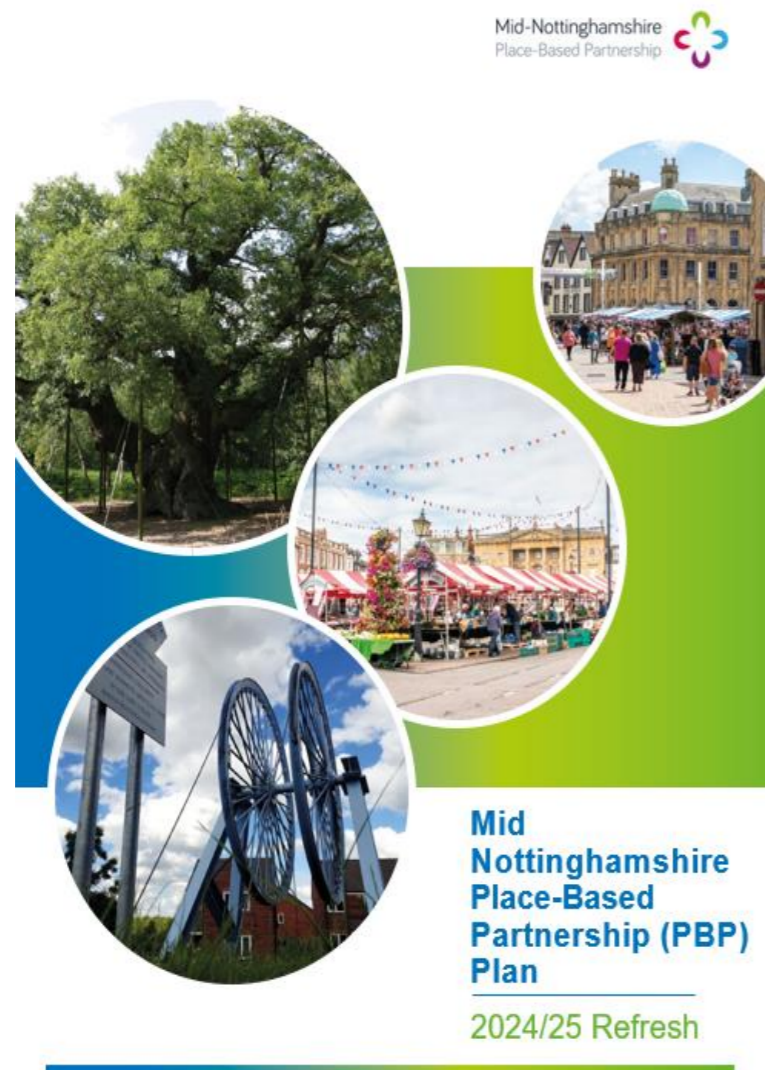
Mid Notts Place Based Partnership Forum
Accelerated Design Event 29th June 2023

“Working as one team to respond to what matters to the individuals and communities of Mid Notts, in a way that empowers them and improves quality of life for all”.

*Our agreed definition of integrated working



PREVENTION – EQUITY – INTEGRATION




Vision

“Working together to enable everyone across Ashfield, Mansfield, Newark and Sherwood to live healthier and happier lives, to prosper in their communities and remain independent throughout life”.

Ambitions

1. Give every child the best chance of maximising their potential
2. Create healthy and sustainable places
3. Everyone can access the right support to improve their health
4. Keep our communities safe and healthy

Themes and Objectives

Best Start	Living Well	Ageing Well	Health Inequalities	PBP Development
<p>Local prioritisation and co-ordination of the Nottinghamshire Best Start Strategy 2021-2025 (first 1,001 days from conception to 2 years) to ensure children have the best start in life and improve mental health support for young people (up to 19 years/25 years SEND) to help shape lifelong health and wellbeing outcomes.</p>	<p>Help people in our communities live healthier for longer through a focus on promoting primary prevention, responding as a partnership to the cost-of-living crisis and transforming services.</p> <p style="text-align: center;"></p> <p style="text-align: center; color: red;">PBP Executives Recommended Priority Theme for 2024/25</p>	<p>Support our older people with underlying conditions to maintain their independence, using data to assign risk levels and multi-professional personalised care approaches, which also aims to increase community connections, activity and relationships.</p>	<p>Address key health inequalities and equity of access through proactive population health management programmes (using the Core20Plus5 framework for children and adults) prioritising geographical areas and population groups most in need and experiencing severe multiple disadvantage.</p>	<p>Continue to enable our partnership to mature, embody our principles and values in the way we work together to deliver integrated services and achieve our vision for the population of Mid Nottinghamshire.</p>

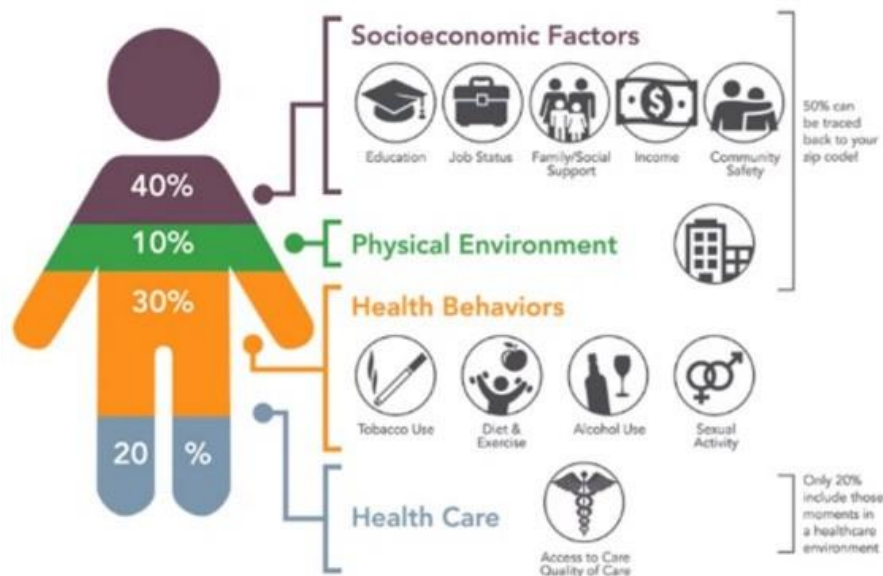
Focused Integrated Neighbourhood Working Programmes:

<p style="text-align: center;">Investing in Communities Programme</p> <table style="width: 100%; border-collapse: collapse;"> <tr> <td style="width: 50%; padding: 5px;">Year 1</td> <td style="width: 50%; padding: 5px;">Year 2</td> </tr> <tr> <td style="padding: 5px;"> <ul style="list-style-type: none"> - Coxmoor - Bellamy - Hawtonville </td> <td style="padding: 5px;"> <ul style="list-style-type: none"> - Leamington - Oak Tree - Ollerton </td> </tr> </table> <p style="font-size: small; margin-top: 5px;">• An evolution of the NHSEI Programme and the building blocks of health</p>	Year 1	Year 2	<ul style="list-style-type: none"> - Coxmoor - Bellamy - Hawtonville 	<ul style="list-style-type: none"> - Leamington - Oak Tree - Ollerton 	<p style="text-align: center;">Health Inequalities Innovation and Investment Programme</p> <p style="font-size: small; margin-top: 5px;">Develop 4 x new Integrated Neighbourhood Teams realigned to focus on addressing prevention and proactive management of long-term conditions (all age), frailty transformation and SMD (linked to the NCC led HIIIF SMD Programme).</p> <p style="font-size: small; margin-top: 5px;">• An evolution of the Community Services Transformation Programme</p>
Year 1	Year 2				
<ul style="list-style-type: none"> - Coxmoor - Bellamy - Hawtonville 	<ul style="list-style-type: none"> - Leamington - Oak Tree - Ollerton 				

PBP Programme Delivery

Each PBP theme and programmes will have an Executive Sponsor who is accountable for ensuring delivery of required outcomes, that all partners are contributing appropriately and that associated risks are managed effectively.

The majority of programme delivery will be through the three District led Health and Wellbeing Partnerships to focus on the improving the wider determinants of health (in recognition that contributes 80% towards a person's health and wellbeing).



Source: Institute for Clinical Systems Improvement, Going Beyond Clinical Walls: Solving Complex Problems (October 2018)

Where there is added value in the PBP leading a piece of work Programme Leads/Managers/ Teams will be appointed from across our different partner organisations promoting an integrated partnership approach.

Co-produced action plans will be developed for each programme during Quarter 1 (with in year deliverables) evidencing how partnership activity will lead to improved population health outcomes.

As a non-statutory partnership with partners that have their own organisational duties and responsibilities, we have sought to identify priorities that would add value and avoid duplication to the work of the partnership's constituent organisations.

Understanding our Impact

We need to better evidence the impact we are having as a partnership on population health through our programmes of work.

One important measure of our success will be reducing the number of years that people spend in ill-health and reducing unfair variation in this. Achieving this will require action as a partnership over the long term.

We will develop a **PBP outcomes framework** aligned to the ICS outcomes framework to evidence our impact, delivering on our social purpose and supporting to system partners.

The PBP Executive and PBP Partnership Forum will oversee and track progress of programme delivery plans.

Glossary of Terms

Age	The time elapsed (usually in complete years) between date of birth and a specific point in time.	Communities	A group of people with social ties, either through the locality in which they live or other shared characteristics.
Core20Plus5	Core20PLUS5 is a national NHS England approach to inform action to reduce healthcare inequalities at both national and system level. The approach defines a target population – the ‘Core20PLUS’ – and identifies ‘5’ focus clinical areas requiring accelerated improvement.	Co-production	Co-production happens when people who access services and their Carers are valued as equal partners, can share power, and have real influence over the decisions that are made. It happens when people and carers are included from the start to the end of any project that affects them. The contribution of people who use services and carers better develop public services.
Ethnicity	A term that refers to the social and cultural characteristics, backgrounds, or experiences shared by a group of people	Health	The state of complete physical, mental, and social wellbeing, and not merely the absence of disease or infirmity
Health Inequalities/ Health Inequities	Health inequalities are unfair and avoidable differences in health across the population, and between different groups within society. Health inequalities arise because of the conditions in which we are born, grow, live, work and age. These conditions influence our opportunities for good health, and how we think, feel and act, and this shapes our mental health, physical health and wellbeing.	Healthy Life Expectancy	The length of time a person spends in good health – in other words not hampered by long term conditions illnesses or injuries.
ICB	Integrated care boards (ICBs) replaced clinical commissioning groups (CCGs). NHS Nottingham and Nottinghamshire Integrated Care Board is an integral part of the Integrated Care System and aims to enable each and every citizen to enjoy their best possible health and wellbeing.	Integrated Care Partnership (ICP)	Local Authorities (LAs) to come together with important stakeholders from across the system and community. Together, the ICP will generate an integrated care strategy to improve health and care outcomes and experiences for their populations, for which all partners will be accountable. ICPs play a critical role towards better health and care outcomes for the people they serve.
Integrated Care System (ICS)	In an ICS, NHS organisations, in partnership with local councils and community and voluntary organisations, take collective responsibility for managing resources, delivering NHS standards and improving the health of the population they serve. The ICS arrangements include: <ul style="list-style-type: none"> • an Integrated Care Partnership, the broad alliance of organisations and representatives concerned with improving the care, health and wellbeing of the population, jointly convened by local authorities and the NHS • an Integrated Care Board, bringing the NHS together locally to improve population health and care. 	Life Expectancy	The average number of years that someone can expect to live.
NHSEI	NHS England and Improvement. This is the national body that leads the National Health Service in England.	Outcomes	Change in health and wellbeing as a result of an intervention or action, either by an individual (exercising more), community (starting a running group) or organisation (creating more green spaces for people to exercise in).
Population	The total number of people resident in that area at a given time.	Primary care network (PCN)	Local collaboration of GP practices, usually covering 30,000 to 50,000 people, working towards integrated primary and community health services. Mid Nottinghamshire Place has six primary care networks.

Glossary of Terms

MSK	Musculoskeletal. The human musculoskeletal system provides stability, support and movement to the body. It consists of skeletal bones, muscles, cartilage, tendons, ligaments, joints and other connective tissue.	Neighbourhood	The smallest and most local area at which services are organised.
Personalised Care	Personalised care gives people choice and control over the way their care is planned and delivered. It is a new relationship between people, professionals and the health and care system.	Place Based Partnerships (PBP)	Place-based partnerships are collaborative arrangements that have been formed across the country by the organisations responsible for arranging and delivering health and care services in a locality or community. They involve the NHS, local government and providers of health and care services, including the voluntary, community and social enterprise sector (VCSE), people and communities (people who use services, their representatives, carers and local residents).
Provider Collaborative at Scale	Provider collaboratives are partnerships that bring together two or more NHS trusts (public providers of NHS services including hospitals and mental health services) to work together at scale to benefit their populations. While providers have worked together for many years, the move to formalise this way of working is part of a fundamental shift in the way the health and care system is organised, moving from an emphasis on organisational autonomy and competition to collaboration and partnership working.	Severe Multiple Disadvantage (SMD)	Severe Multiple Disadvantage (SMD) refers to people with two or more of the following issues: homelessness, mental health issues, offending and substance misuse. It can also include other sources of disadvantage, for instance poor physical health and, particularly for women, being a victim of domestic and sexual abuse.
Strategic Objectives	Strategic objectives are our PBP's long-term goals to achieve our overall vision. These objectives provide direction for the Partnership and serve as a roadmap for success.	System Analysis and Intelligence Unit	The SAIU brings together and develops existing CCG and ICS workforce with the purpose of delivering: <ul style="list-style-type: none"> • Population intelligence to support planning, and strategy; • Analytical intelligence that spans the entire commissioning cycle. This includes capacity and demand modelling, PHM deep dives as well as quantifying and evaluating the value of transformational initiatives; • Oversight of regional, national benchmarking data, as well as insight, contextual analysis and comparative information to support the interpretation of local data to improve quality of care and outcomes for our population; • Embedding an analytical approach to Health Inequalities which underpins all outputs; • Utilising best practice evidence based interventions and new models to develop improved quality outcomes for our population. <p>The SAIU is an independent team within the ICS that operates across the system transcending strategic and operational activities.</p>
Joint Health and Wellbeing Strategy	The Joint Health and Wellbeing Strategy outlines the priority areas and how we would like to work together to improve people's health and reduce health inequalities.		

