

Nottingham and Nottinghamshire ICS
**Community Transformation
Programme**



Update to the Mid Notts PBP Partnership Forum

17th November 2022

Leanne Monger, Deputy Locality Director, Mid Notts Locality Team, NHS Notts and Nottinghamshire – presenting with colleagues from the programme and local design teams in Ashfield, Mansfield and Newark.



What does good look like for community services?

From the discussions at engagement events and the online surveys, **key themes** emerged as principles for the development of our community services.





100 Day Cycle approach

Working together to create and implement solutions – at a local level

**Key principles
and priorities of
Community Care**

**Neighbourhood
priorities that will
make the biggest
difference**

**Citizen
engagement
(our current
and future
story)**

**Health
inequalities and
measurement
data**

**What does
'good' look
like? Vision/
how/
measures**

**Digital
enablers**

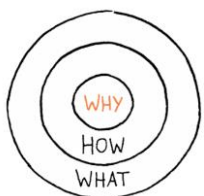
**Community
conversations -
improvement
ideas from lived
experience**

**Theme ideas and
create
Improvement
Plan**

**Community
Asset
Mapping**

**Workforce
enablers**

**What are we
going to do
differently?
Lets trial it!**



Mid Notts Early Adopters: overview

PCN	Focus area
Newark	<ul style="list-style-type: none">• Empowering Communities – Health Literacy & Access to Information• Build services around people to enable self-care• Sign posting and sharing information on services – both digitally and community based• Improving services for young people
Ashfield	
Mansfield	



Early Adopters: generic benefits

MDT/Multi
Organisational
Teams at PCN level

Building trust and
relationships
across stakeholders

Considering Wider
Determinants of
Health

Forum that can
take on other
challenges of PCN
and/or system

Citizens involved
and true Co-
production

Single joined up
solutions rather
than multiple
organisations



Newark Local Design Team

Beverley Macmillan – Housing Officer, Newark and Sherwood District Council

Key focus areas

- Accessing medical appointments
- Communicating to people without digital access
- Telling my story once

Celebrating success/next steps

- Community services information - access and where to look e.g. accessing appointments > transport/digital appointments/locally based services
- Community Support Record – joined up communication across community workers
- Directory of services – who is who/services provided/referral criteria and how to access

Local Design Teams – added value

- Added value alongside other programmes e.g. Council Innovation, Ageing Well incl. shared learning
- Build relationships/understand the vast community remit within our neighbourhoods
- We are the ‘ears and mouth’ for people we work with every day





Mansfield Local Design Team

Dominic Ayton - Health and Wellbeing Officer, Mansfield District Council

Key focus areas

- Community voice and voice of the workforce – asked about wider determinants of health, what affects Health and Wellbeing and what could be better
- Access to services, appointments, transport (for outlying areas) for people and workforce
- Information sharing – don't know what you don't know - maintaining information about services – how do we constantly have robust/up to date info for communities/workforce

Celebrating success/next steps

- Interim funding to extend interim comm transport scheme until March '23 – to be analysed for Return on Investment
- Communication material maintained to share services/event availability – want to incl. benefits advice too (as outreach) and what other outreach services can be delivered? PKB and NHS app training
- Engagement /support for underserved communities eg. Language barriers. Workforce to reflect support

Local Design Teams – added value

- Trusted relationships , putting a face to a name
- Maintaining momentum



Ashfield Local Design Team

Gregg Dunning – Team Manager, Social Care, Notts County Council

Key focus areas

- Access to information – knowledge of what services are available and how to access them
- Support to prevent social isolation across all ages
- Youth activities
- Warm hubs and welcome spaces
- Understanding people's history/background

Celebrating success/next steps

- Community assets identified – community comms – you said/we did
- Shared learning from Newark re Community Support Record – pilot next!
- Current youth services – baseline and signposting

Local Design Teams – added value

- Start of meaningful plan of small changes that will make a big difference
- Continued determination to bring about real and lasting change to the lives of residents
- Information sharing and collaborative learning



100 day cycle Mid Notts evaluation

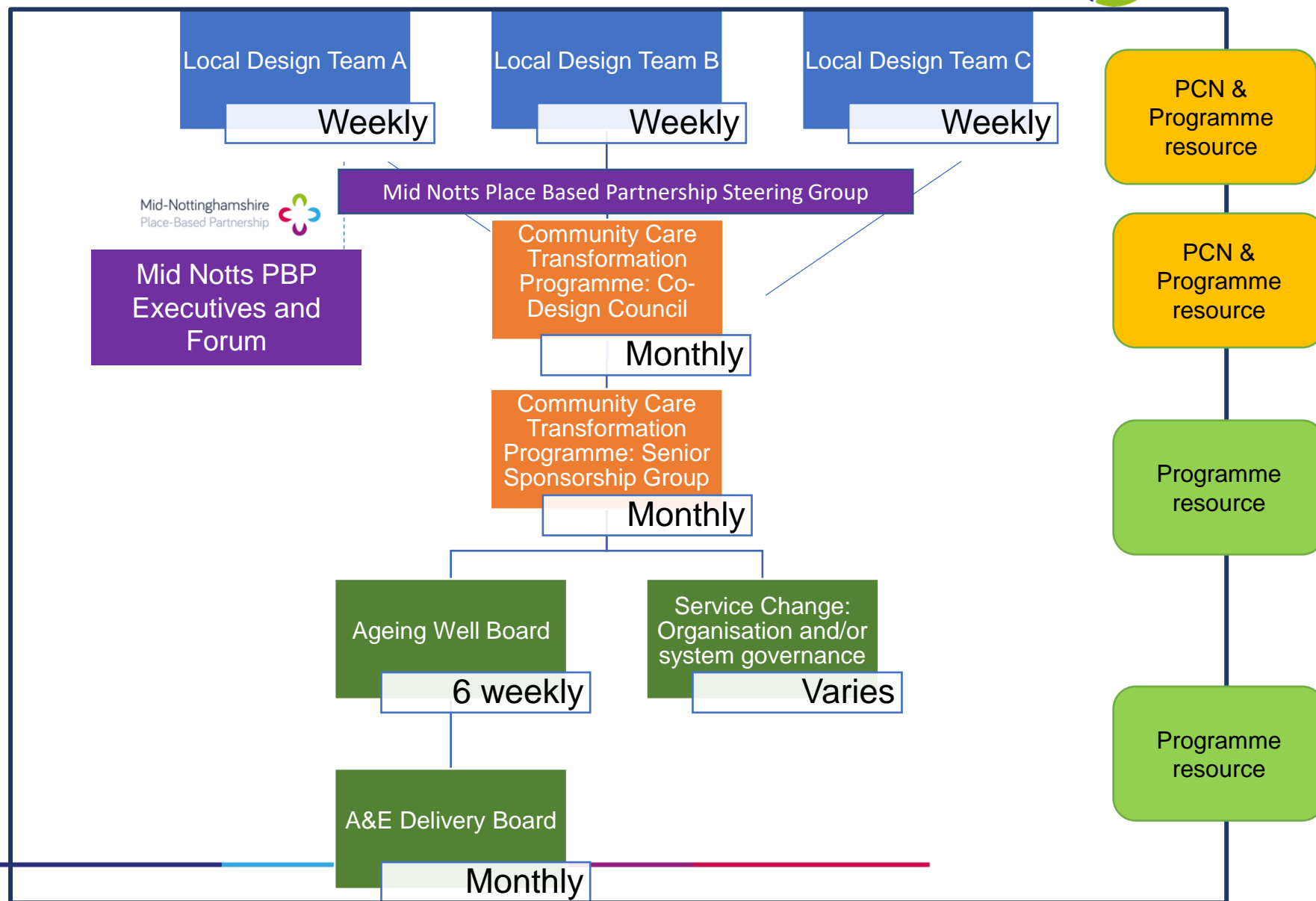
- Value Lived Experience
- Ensure representation from frontline staff to bring about change
- Time is needed to implement the changes and evaluate
- Collaborating non-competitively, committed to making practical changes
- Establishing relationships of trust within the Local Design Team and with the immediate and wider communities
- Continued determination to bring about real and lasting change to the lives of residents
- Information sharing and collaborative learning
- Clarify Local Design Team and support roles/expectations



Governance Structure

The programme has appropriate governance at all levels:

- PCN/Neighbourhood
- Place
- Programme
- System/ICB





Integrated
Care System
Nottingham & Nottinghamshire

Next steps.....

- Maintaining momentum for future 100 Day Cycles (and agreed improvement focus)
- Co-production approach (with our community) to improvements
- Maintain system partner relationships
- Measure the impact of the improvements – for community and professionals
- Alignment of Programmes



System Programmes - Similarities



**Integrated
Care System**
Nottingham & Nottinghamshire

Mid-Nottinghamshire
Place-Based Partnership



What matters to citizens?

Personalised care

Local services

Staying in my own home

Feeling connected

Keeping well

Making my own choices

Joined up services

How do we deliver this?

Local Design Teams

Data driven – use of PHM

Address health inequalities

Co-production

Common language

Developing community assets

Social prescribing

Focus on prevention

Wider determinants of health

Work with VCSE sector

Working at a PCN level

System leadership

Who is delivering this?

Community
Transformation

Anticipatory Care
(Ageing Well)

Social Care /
Innovation sites

Localities / Place

Our ask of PBP Partnership Forum

- Ongoing engagement with current early adopter sites
- Champion support – especially with communication and engagement
- Challenge and scrutinise delivery and next steps to ensure alignment with PBP priorities/developing place plans
- Consider further applications for future cohorts of Local Design Teams?

Thank you for listening



Integrated
Care System
Nottingham & Nottinghamshire

Any
Questions?